



**FLADREMSKIVER FOR TAPER BØSNINGER  
 FLAT BELT PULLEYS FOR TAPER BUSHES  
 FLACHRIEMENSCHLEIBEN FÜR TAPER  
 BUCHSEN**

**POLY-V SKIVER  
 POLY-V PULLEYS  
 POLY-V SCHEIBEN**

<b>Leveringsprogram</b>	<b>Side</b>
<b>Product Range</b>	<b>Page</b>
<b>Lieferprogramm</b>	<b>Seite</b>
Fladremskiver for Taper Bøsninger	
Flat Belt Pulleys for Taper Bushes	
Flachriemenscheiben für Taper Buchsen .....	29
Poly-V Skiver	
Poly-V Pulleys	
Poly-V Scheiben .....	31

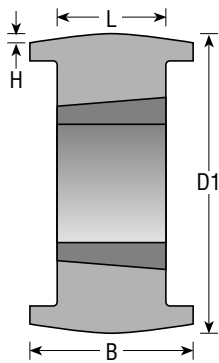
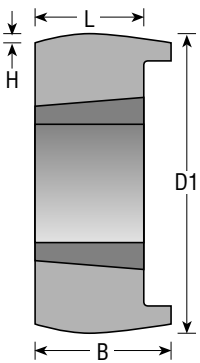
**Mål og materialeangivelser er med forbehold.  
 All dimensions and materials may be subject to change.  
 Mass- und Materialabweichungen vorbehalten.**

# FLADREMSKIVER FOR TAPER BØSNINGER

## FLAT BELT PULLEYS FOR TAPER BUSHES

### FLACHRIEMENSCHLEIBEN FÜR TAPER BUCHSEN

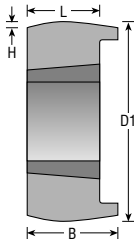
<b>Materiale:</b>	GG 20-25	<b>Material:</b>	Fine grain cast-iron grade 220-260	<b>Material:</b>	Hochwertiger Grauguss GG 20 - GG 25
<b>Rundløbskast:</b>	DIN 111	<b>Eccentricity of O/D to bore</b>	DIN 111	<b>Rundlauf-Genauigkeit:</b>	DIN 111
<b>Planløbskast:</b>	DIN 111	<b>Groove side wobble tolerance</b>	DIN 111	<b>Planlauf-Genauigkeit:</b>	DIN 111
<b>Overfladeruhed:</b>	Løbeflade: RA=3,2	<b>Surface roughness:</b>	Crowned face: RA=3,2.	<b>Oberfläche Rauheit:</b>	Lauffläche: RA=3,2
<b>Afbalancering:</b>	ISO 1940  Ab lager statisk G 6,3 Ab lager dyn. G 6,3 ≥ 355 mm Efter ordre dyn. G 6,3 < 355 mm.	<b>Balance quality grade:</b>	ISO 1940  Pulleys from stock are statically balanced to grade G 6,3 and from 355 mm dynamically balanced to grade G 6,3. Pulleys smaller than 355 mm dynamic balancing can be supplied to order.	<b>Auswucht-Gütestufe:</b>	ISO 1940. Lagerscheiben mit Gütestufe G 6,3 in einer Ebene und ab Ø 355 mm in zwei Ebenen. Kleiner als Ø 355 mm nach Vereinbarung in zwei Ebenen.



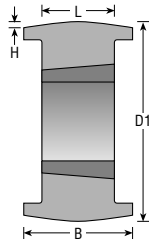
# FLADREMSKIVER FOR TAPER BØSNINGER

## FLAT BELT PULLEYS FOR TAPER BUSHES

### FLACHRIEMENSCHLEIBEN FÜR TAPER BUCHSEN



Figur 1



Figur 3

Fig. ● = Fuldskive/Solid Pulley/Vollscheibe  
Fig. ○ = Grundskive/Plate Pulley/Bodenscheibe

DI	B	Bøsn. nr. Bush No. Buchse	Best. nr. Part No. Best. Nr.	L	Fig.	H	Omdrejningstal Speed Drehzahl	Vægt uden bøsning Weight without bush Gewicht ohne Buchse
63	50	1108	FL063050	22	3 ●	0,3	12000	0,6
80	50	1210	FL080050	25	1 ●	0,3	9500	1,2
	80	1615	FL080080	38	1 ●	0,3	9500	1,5
90	50	1615	FL090050	38	1 ●	0,3	8500	1,5
	80	1615	FL090080	38	1 ●	0,3	8500	1,9
	100	1615	FL090100	38	3 ●	0,3	8500	2,2
100	50	1615	FL100050	38	1 ●	0,3	7500	1,8
	80	1615	FL100080	38	1 ●	0,3	7500	2,4
	100	1615	FL100100	38	3 ●	0,3	7500	2,7
125	50	2012	FL125050	32	1 ●	0,4	6000	2,6
	80	2517	FL125080	45	1 ●	0,4	6000	3,4
	100	2517	FL125100	45	3 ●	0,4	6000	3,8
	125	2517	FL125125	45	3 ●	0,4	6000	4,5
140	50	2012	FL140050	32	1 ●	0,4	5400	3,4
	80	2517	FL140080	45	1 ●	0,4	5400	4,5
	100	3020	FL140100	51	1 ●	0,4	5400	4,9
	125	3030	FL140125	76	1 ●	0,4	5400	5,2
150	50	2012	FL150050	32	1 ●	0,4	5000	4,0
	80	2517	FL150080	45	1 ●	0,4	5000	5,4
	100	3020	FL150100	51	1 ●	0,4	5000	6,2
	125	3030	FL150125	76	1 ●	0,4	5000	6,7
	160	3030	FL150160	76	1 ●	0,4	5000	7,6
160	50	2012	FL160050	32	1 ●	0,5	4750	4,6
	80	2517	FL160080	45	1 ●	0,5	4750	6,3
	100	3020	FL160100	51	1 ●	0,5	4750	7,5
	125	3030	FL160125	76	1 ●	0,5	4750	8,5
	160	3030	FL160160	76	1 ●	0,5	4750	10,0
180	80	2517	FL180080	45	1 ●	0,5	4250	7,2
	100	3020	FL180100	51	1 ●	0,5	4250	9,8
	125	3030	FL180125	76	1 ●	0,5	4250	12,0
	160	3030	FL180160	76	1 ●	0,5	4250	14,0
	200	80	2517	FL200080	45	1 ○	0,6	3800
100		3020	FL200100	51	1 ●	0,6	3800	12,0
125		3030	FL200125	76	1 ●	0,6	3800	15,5
160		3030	FL200160	76	1 ●	0,6	3800	18,0
224		80	2517	FL224080	45	1 ○	0,6	3400
	100	3020	FL224100	51	1 ○	0,6	3400	11,5
	125	3030	FL224125	76	1 ○	0,6	3400	15,0
	160	3030	FL224160	76	1 ○	0,6	3400	17,0
250	80	2517	FL250080	45	1 ○	0,8	3000	8,5
	100	3020	FL250100	51	1 ○	0,8	3000	11,0
	125	3030	FL250125	76	1 ○	0,8	3000	15,5
	160	3030	FL250160	76	1 ○	0,8	3000	17,5
280	100	3020	FL280100	51	1 ○	0,8	2700	13,4
	125	3030	FL280125	76	1 ○	0,8	2700	17,3
	160	3535	FL280160	89	1 ○	0,8	2700	21,8
	200	4040	FL280200	102	1 ○	0,8	2700	28,3
315	100	3020	FL315100	51	1 ○	0,8	2400	15,8
	125	3030	FL315125	76	1 ○	0,8	2400	19,0
	160	3535	FL315160	89	1 ○	0,8	2400	26,0
	200	4040	FL315200	102	1 ○	0,8	2400	32,0
355	100	3030	FL355100	76	1 ○	0,8	2150	20,0
	125	3030	FL355125	76	1 ○	0,8	2150	22,0
	160	3535	FL355160	89	1 ○	0,8	2150	27,0
	200	4040	FL355200	102	1 ○	0,8	2150	36,0
400	100	3535	FL400100	89	1 ○	1,0	1900	26,0
	125	3535	FL400125	89	1 ○	1,0	1900	28,0
	160	3535	FL400160	89	1 ○	1,0	1900	32,0
	200	4040	FL400200	102	1 ○	1,0	1900	40,0
450	160	3535	FL450160	89	1 ○	1,0	1700	42,5
	200	4040	FL450200	102	3 ○	1,0	1700	54,5
500	160	4040	FL500160	102	3 ○	1,0	1500	53,0
	200	4545	FL500200	115	3 ○	1,0	1500	69,0
560	160	4040	FL560160	102	3 ○	1,2	1350	66,5
	200	4545	FL560200	115	3 ○	1,2	1350	86,0
630	160	4545	FL630160	115	3 ○	1,2	1200	80,0
	200	5050	FL630200	127	3 ○	1,2	1200	103,0



**Materiale:** GG 20-25  
**Rundløbskast:** DIN 7867  
**Planløbskast:** DIN 7867  
**Overfladeruhed:** ISO 254  
**Afbalancering:** ISO 1940 -VDI 2060

Skiver med dm (middel diam.) >125 mm afbalanceres statisk G 6,3.  
 Dog accepteres en restubalance på 2 g på skivens dm (middel diam.).  
 Restubalancen er ≤100 g mm/kg ved 600 o./min. og 20 g mm/kg ved 3000 o./min.  
 Efter ordre leveres også dynamisk G 6,3-G 2,5.

**Material:** Fine grain cast-iron grade 220-260  
**Eccentricity of O/D to bore** DIN 7867  
**Groove side wobble tolerance:** DIN 7867  
**Surface roughness:** ISO 254  
**Balance quality grade:** ISO 1940 -VDI 2060

Pulleys with dm (pcd) >125 mm are statically balanced to grade G 6,3.  
 A residual unbalance of 2 g on the pulley dm (pcd) will be accepted.  
 The residual unbalance is ≤100 g mm/kg at 600 rev./min. and 20 g mm/kg at 3000 rev./min.  
 Dynamic G 6,3-G 2,5 balancing can be supplied to order.

**Material:** Hochwertiger Grauguss GG 20 - GG 25  
**Rundlauf-Genauigkeit:** DIN 7867  
**Planlauf-Genauigkeit:** DIN 7867  
**Oberfläche Rauheit:** ISO 254  
**Auswucht-Gütestufe:** ISO 1940 -VDI 2060

Scheiben mit dm (dw) > 125 mm werden statisch ausgewuchtet, Gütestufe G 6,3, jedoch wird eine Restunwucht auf 2 g am Scheiben dm (dw) akzeptiert.  
 Die Restunwucht beträgt ≤100 g mm/kg bei 600 u./min. und 20 g mm/kg bei 3000 u./min.  
 Nach Vereinbarung in zwei Ebenen, Gütestufe G 6,3-G 2,5.

**PROFIL J**

Spor / Grooves / Rillen	4	8	12	16	20
B(mm)	13,5	23	32,5	42	52
F(mm)	3,24	3,31	3,38	3,45	3,77

Sporafstand	2,34
C. D. of grooves	
Rillenabstand	

**PROFIL L**

Spor / Grooves / Rillen	6	8	10	12	16	20
B(mm)	38,5	48	57	67	86	105
F(mm)	7,5	7,55	7,35	7,65	7,75	7,85

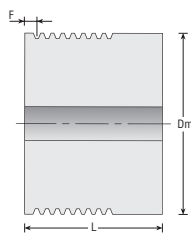
Sporafstand	4,70
C. D. of grooves	
Rillenabstand	



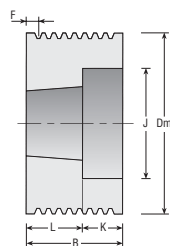
A4

**PROFIL J**  
**SECTION J**  
**PROFIL J**

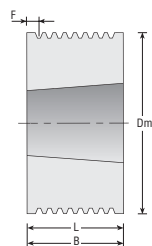
**POLY-V SKIVER**  
**POLY-V PULLEYS**  
**POLY-V SCHEIBEN**



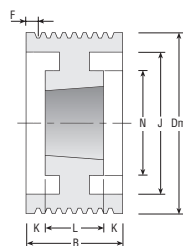
Figur 1



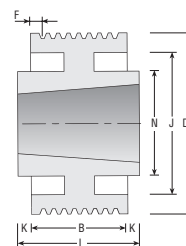
Figur 2



Figur 3

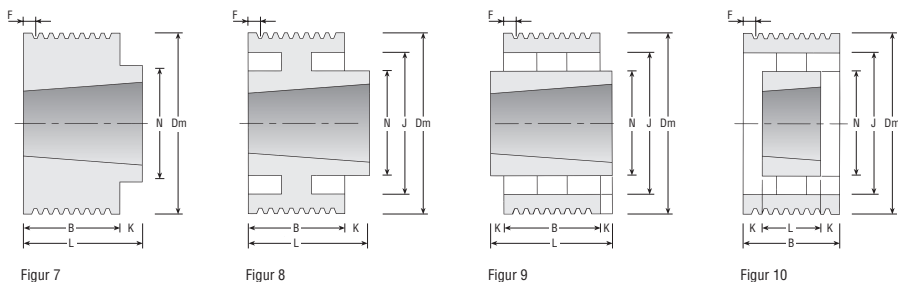


Figur 5



Figur 6

Dm	Spør Grooves		Part Nr.	Taper Bush Type	Fig.	L	K	N	J	d	Dm	Spør Grooves		Part Nr.	Taper Bush Type	Fig.	L	K	N	J	d
	Rillen	Mat.										Rillen	Mat.								
20	4	GG	PJ02004N	-	1	22.5	-	-	-	5	63	4	GG	PJ06304T	1108	7	23	9.5	50	-	-
	8	GG	PJ02008N	-	1	32	-	-	-	5		8	GG	PJ06308T	1108	3	23	-	-	-	-
	12	GG	PJ02012N	-	1	41.5	-	-	-	5		12	GG	PJ06312T	1108	2	23	9.5	-	45	-
	16	GG	PJ02016N	-	1	51	-	-	-	5		16	GG	PJ06316N	-	1	51	-	-	-	12
	20	GG	PJ02020N	-	1	61	-	-	-	5		20	GG	PJ06320N	-	1	61	-	-	-	12
25	4	GG	PJ02504N	-	1	22.5	-	-	-	5	67	4	GG	PJ06704T	1108	7	23	9.5	50	-	-
	8	GG	PJ02508N	-	1	32	-	-	-	5		8	GG	PJ06708T	1108	3	23	-	-	-	-
	12	GG	PJ02512N	-	1	41.5	-	-	-	5		12	GG	PJ06712T	1108	2	23	9.5	-	51	-
	16	GG	PJ02516N	-	1	51	-	-	-	5		16	GG	PJ06716N	-	1	51	-	-	-	12
	20	GG	PJ02520N	-	1	61	-	-	-	5		20	GG	PJ06720N	-	1	61	-	-	-	12
30	4	GG	PJ03004N	-	1	22.5	-	-	-	9.5	71	4	GG	PJ07104T	1108	7	23	9.5	60	-	-
	8	GG	PJ03008N	-	1	32	-	-	-	9.5		8	GG	PJ07108T	1108	3	23	-	-	-	-
	12	GG	PJ03012N	-	1	41.5	-	-	-	9.5		12	GG	PJ07112T	1108	2	23	9.5	-	55	-
	16	GG	PJ03016N	-	1	51	-	-	-	9.5		16	GG	PJ07116T	1215	3	42	-	-	55	-
	20	GG	PJ03020N	-	1	61	-	-	-	9.5		20	GG	PJ07120T	1215	2	42	10	-	55	-
35	4	GG	PJ03504N	-	1	22.5	-	-	-	9.5	75	4	GG	PJ07504T	1108	7	23	9.5	60	-	-
	8	GG	PJ03508N	-	1	32	-	-	-	9.5		8	GG	PJ07508T	1108	3	23	-	-	-	-
	12	GG	PJ03512N	-	1	41.5	-	-	-	9.5		12	GG	PJ07512T	1210	2	26	6.5	-	59	-
	16	GG	PJ03516N	-	1	51	-	-	-	9.5		16	GG	PJ07516T	1610	2	26	16	-	59	-
	20	GG	PJ03520N	-	1	61	-	-	-	9.5		20	GG	PJ07520T	1615	2	42	10	-	59	-
40	4	GG	PJ04004N	-	1	22.5	-	-	-	12	80	4	GG	PJ08004T	1310	7	26	12.5	70	-	-
	8	GG	PJ04008N	-	1	32	-	-	-	12		8	GG	PJ08008T	1310	7	26	3	70	-	-
	12	GG	PJ04012N	-	1	41.5	-	-	-	12		12	GG	PJ08012T	1610	2	26	6.5	-	64	-
	16	GG	PJ04016N	-	1	51	-	-	-	12		16	GG	PJ08016T	1610	2	26	16	-	64	-
	20	GG	PJ04020N	-	1	61	-	-	-	12		20	GG	PJ08020T	1615	2	42	10	-	64	-
45	4	GG	PJ04504N	-	1	22.5	-	-	-	12	85	4	GG	PJ08504T	1310	7	26	12.5	70	-	-
	8	GG	PJ04508N	-	1	32	-	-	-	12		8	GG	PJ08508T	1310	7	26	3	70	-	-
	12	GG	PJ04512N	-	1	41.5	-	-	-	12		12	GG	PJ08512T	1610	2	26	6.5	-	69	-
	16	GG	PJ04516N	-	1	51	-	-	-	12		16	GG	PJ08516T	1610	2	26	16	-	69	-
	20	GG	PJ04520N	-	1	61	-	-	-	12		20	GG	PJ08520T	1615	2	42	10	-	69	-
50	4	GG	PJ05004N	-	1	22.5	-	-	-	12	90	4	GG	PJ09004T	1610	7	26	12.5	82	-	-
	8	GG	PJ05008N	-	1	32	-	-	-	12		8	GG	PJ09008T	1610	7	26	3	82	-	-
	12	GG	PJ05012N	-	1	41.5	-	-	-	12		12	GG	PJ09012T	1610	2	26	6.5	-	74	-
	16	GG	PJ05016N	-	1	51	-	-	-	12		16	GG	PJ09016T	1610	2	26	16	-	74	-
	20	GG	PJ05020N	-	1	61	-	-	-	12		20	GG	PJ09020T	1615	2	42	10	-	74	-
56	4	GG	PJ05604T	1108	7	23	9.5	50	-	-	95	4	GG	PJ09504T	1610	7	26	12.5	82	-	-
	8	GG	PJ05608T	1108	3	23	-	-	-	-		8	GG	PJ09508T	1610	7	26	3	82	-	-
	12	GG	PJ05612N	-	1	41.5	-	-	-	12		12	GG	PJ09512T	1610	2	26	6.5	-	79	-
	16	GG	PJ05616N	-	1	51	-	-	-	12		16	GG	PJ09516T	1610	2	26	16	-	79	-
	20	GG	PJ05620N	-	1	61	-	-	-	12		20	GG	PJ09520T	1615	2	42	10	-	79	-
60	4	GG	PJ06004T	1108	7	23	9.5	50	-	-	100	4	GG	PJ10004T	1610	7	26	12.5	82	-	-
	8	GG	PJ06008T	1108	3	23	-	-	-	-		8	GG	PJ10008T	1610	7	26	3	82	-	-
	12	GG	PJ06012T	1108	2	23	9.5	-	45	-		12	GG	PJ10012T	1610	2	26	6.5	-	82	-
	16	GG	PJ06016N	-	1	51	-	-	-	12		16	GG	PJ10016T	1610	2	26	16	-	82	-
	20	GG	PJ06020N	-	1	61	-	-	-	12		20	GG	PJ10020T	1615	2	42	10	-	82	-



Dm	Spor Grooves		Part Nr.	Taper Bush Type	Fig.	L	K	N	J	d
	Rillen	Mat.								
106	4	GG	PJ10604T	1610	7	26	12.5	88	-	-
	8	GG	PJ10608T	1610	7	26	3	88	-	-
	12	GG	PJ10612T	1610	2	26	6.5	-	88	-
	16	GG	PJ10616T	1610	2	26	16	-	88	-
	20	GG	PJ10620T	1615	2	42	10	-	88	-
112	4	GG	PJ11204T	1610	7	26	12.5	90	-	-
	8	GG	PJ11208T	1610	7	26	3	90	-	-
	12	GG	PJ11212T	1610	2	26	6.5	-	94	-
	16	GG	PJ11216T	1610	2	26	16	-	94	-
	20	GG	PJ11220T	1615	2	42	10	-	94	-
118	4	GG	PJ11804T	1610	7	26	12.5	90	-	-
	8	GG	PJ11808T	1610	7	26	3	90	-	-
	12	GG	PJ11812T	2012	2	32	0.5	-	98	-
	16	GG	PJ11816T	2012	2	32	10	-	98	-
	20	GG	PJ11820T	2012	2	32	20	-	98	-
125	4	GG	PJ12504T	1610	8	26	12.5	90	109	-
	8	GG	PJ12508T	1610	8	26	3	90	109	-
	12	GG	PJ12512T	2012	2	32	0.5	-	105	-
	16	GG	PJ12516T	2012	2	32	10	-	105	-
	20	GG	PJ12520T	2517	2	45	7	-	105	-
132	4	GG	PJ13204T	1610	8	26	12.5	90	116	-
	8	GG	PJ13208T	1610	8	26	3	90	116	-
	12	GG	PJ13212T	2012	2	32	0.5	-	112	-
	16	GG	PJ13216T	2012	2	32	10	-	112	-
	20	GG	PJ13220T	2517	2	45	7	-	112	-
140	4	GG	PJ14004T	1610	8	26	12.5	90	124	-
	8	GG	PJ14008T	1610	8	26	3	90	124	-
	12	GG	PJ14012T	2517	7	45	12.5	120	-	-
	16	GG	PJ14016T	2517	7	45	3	120	-	-
	20	GG	PJ14020T	2517	2	45	7	-	124	-
160	4	GG	PJ16004T	2012	8	32	18.5	110	144	-
	8	GG	PJ16008T	2012	8	32	9	110	144	-
	12	GG	PJ16012T	2517	8	45	12.5	120	140	-
	16	GG	PJ16016T	2517	8	45	3	120	140	-
	20	GG	PJ16020T	2517	2	45	7	-	140	-
180	4	GG	PJ18004T	2012	6	32	9.25	110	164	-
	8	GG	PJ18008T	2012	6	32	4.5	110	164	-
	12	GG	PJ18012T	2517	6	45	6.25	120	160	-
	16	GG	PJ18016T	2517	6	45	1.5	120	160	-
	20	GG	PJ18020T	2517	5	45	3.5	120	160	-
200	4	GG	PJ20004T	2012	6	32	9.25	110	185	-
	8	GG	PJ20008T	2012	6	32	4.5	110	185	-
	12	GG	PJ20012T	2517	6	45	6.25	120	180	-
	16	GG	PJ20016T	2517	6	45	1.5	120	180	-
	20	GG	PJ20020T	2517	5	45	3.5	120	180	-

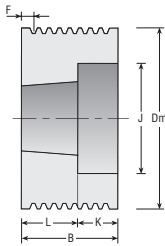
Dm	Spor Grooves		Part Nr.	Taper Bush Type	Fig.	L	K	N	J	d
	Rillen	Mat.								
224	4	GG	PJ22404T	2012	6	32	9.25	110	208	-
	8	GG	PJ22408T	2012	6	32	4.5	110	208	-
	12	GG	PJ22412T	2517	6	45	6.25	120	204	-
	16	GG	PJ22416T	2517	6	45	1.5	120	204	-
	20	GG	PJ22420T	2517	5	45	3.5	120	204	-
250	4	GG	PJ25004T	2012	9	32	9.25	110	234	-
	8	GG	PJ25008T	2012	9	32	4.5	110	234	-
	12	GG	PJ25012T	2517	6	45	6.25	120	230	-
	16	GG	PJ25016T	2517	6	45	1.5	120	230	-
	20	GG	PJ25020T	2517	5	45	3.5	120	230	-
280	4	GG	PJ28004T	2012	9	32	9.25	110	264	-
	8	GG	PJ28008T	2012	9	32	4.5	110	264	-
	12	GG	PJ28012T	2517	9	45	6.25	120	260	-
	16	GG	PJ28016T	2517	9	45	1.5	120	260	-
	20	GG	PJ28020T	2517	10	45	3.5	120	260	-
315	4	GG	PJ31504T	2012	9	32	9.25	110	299	-
	8	GG	PJ31508T	2012	9	32	4.5	110	299	-
	12	GG	PJ31512T	2517	9	45	6.25	120	295	-
	16	GG	PJ31516T	2517	9	45	1.5	120	295	-
	20	GG	PJ31520T	2517	10	45	3.5	120	295	-
355	4	GG	PJ35504T	2517	9	45	15.7	120	339	-
	8	GG	PJ35508T	2517	9	45	11	120	339	-
	12	GG	PJ35512T	2517	9	45	6.25	120	335	-
	16	GG	PJ35516T	3020	9	52	5	146	335	-
	20	GG	PJ35520T	3020	10	52	-	146	335	-
400	4	GG	PJ40004T	2517	9	45	15.75	120	380	-
	8	GG	PJ40008T	2517	9	45	11	120	380	-
	12	GG	PJ40012T	2517	9	45	6.25	120	380	-
	16	GG	PJ40016T	3020	9	52	5	146	380	-
	20	GG	PJ40020T	3020	10	52	-	146	380	-



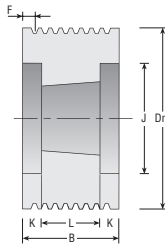
A4

# PROFIL L SECTION L PROFIL L

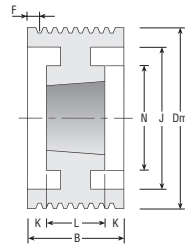
# POLY-V SKIVER POLY-V PULLEYS POLY-V SCHEIBEN



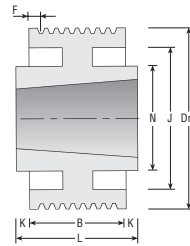
Figur 2



Figur 4



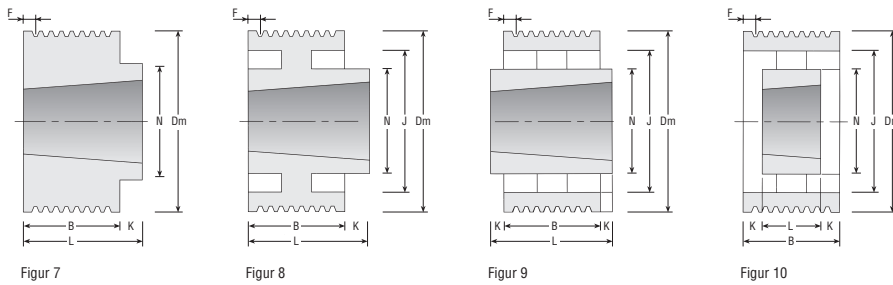
Figur 5



Figur 6

Dm	Spør Grooves		Part Nr.	Taper Bush Type	Fig.	L	K	N	J	Dm	Spør Grooves		Part Nr.	Taper Bush Type	Fig.	L	K	N	J		
	Rillen	Mat.									Rillen	Mat.									
75	6	GG	PL07506T	1210	2	26	12.5	-	56	125	6	GG	PL12506T	2012	2	32	6.5	-	101		
	8	GG	PL07508T	1210	2	26	22	-	56		8	GG	PL12508T	2012	2	32	16	-	101		
	10	GG	PL07510T	1215	2	42	15	-	56		10	GG	PL12510T	2517	4	45	6	-	101		
	12	GG	PL07512T	1215	2	42	25	-	56		12	GG	PL12512T	2517	4	45	11	-	101		
80	6	GG	PL08006T	1210	2	26	12.5	-	56	16	16	GG	PL12516T	2517	4	45	20.5	-	101		
	8	GG	PL08008T	1210	2	26	22	-	56		20	GG	PL12520T	2517	4	45	30	-	101		
	10	GG	PL08010T	1215	2	42	15	-	56		132	6	GG	PLI3206T	2012	2	32	6.5	-	108	
	12	GG	PL08012T	1215	2	42	25	-	56			8	GG	PLI3208T	2012	2	32	16	-	108	
10	GG	PL08506T	1210	2	26	12.5	-	61	10	GG		PLI3210T	2517	4	45	6	-	108			
12	GG	PL08508T	1210	2	26	22	-	61	12	GG		PLI3212T	2517	4	45	11	-	108			
85	10	GG	PL08510T	1215	2	42	15	-	61	16	16	GG	PLI3216T	2517	4	45	20.5	-	108		
	12	GG	PL08512T	1215	2	42	25	-	61		20	GG	PLI3220T	2517	4	45	30	-	108		
	12	GG	PL09006T	1610	2	26	12.5	-	66		140	6	GG	PLI4006T	2517	7	45	6.5	120	-	
	8	GG	PL09008T	1610	2	26	22	-	66			8	GG	PLI4008T	2517	2	45	3	-	116	
10	GG	PL09010T	1615	2	42	15	-	66	10	GG		PLI4010T	2517	4	45	6	-	116			
12	GG	PL09012T	1615	2	42	25	-	66	12	GG		PLI4012T	2517	4	45	11	-	116			
90	16	GG	PL09016T	1615	4	42	22	-	66	16	16	GG	PLI4016T	2517	4	45	20.5	-	116		
	6	GG	PL09506T	1610	2	26	12.5	-	71		150	6	GG	PLI5006T	2517	7	45	6.5	120	-	
	8	GG	PL09508T	1610	2	26	22	-	71			8	GG	PLI5008T	2517	2	45	3	-	126	
	10	GG	PL09510T	1615	2	42	15	-	71			10	GG	PLI5010T	2517	4	45	6	-	126	
12	GG	PL09512T	1615	2	42	25	-	71	12	GG		PLI5012T	2517	4	45	11	-	126			
95	16	GG	PL09516T	1615	4	42	22	-	71	16	16	GG	PLI5016T	2517	4	45	20.5	-	126		
	6	GG	PLI0006T	1610	2	26	12.5	-	76		160	6	GG	PLI6006T	2517	7	45	6.5	120	-	
	8	GG	PLI0008T	1610	2	26	22	-	76			8	GG	PLI6008T	2517	2	45	3	-	136	
	10	GG	PLI0010T	2012	2	32	25	-	79			10	GG	PLI6010T	2517	4	45	6	-	136	
12	GG	PLI0012T	2012	2	32	35	-	79	12	GG		PLI6012T	2517	4	45	11	-	136			
100	16	GG	PLI0016T	2012	4	32	27	-	79	16	16	GG	PLI6016T	3020	4	52	17	-	136		
	6	GG	PLI0606T	1610	2	26	12.5	-	82		20	20	GG	PLI6020T	3020	4	52	26.5	-	136	
	8	GG	PLI0608T	1610	2	26	22	-	82			170	6	GG	PLI7006T	2517	8	45	6.5	120	146
	10	GG	PLI0610T	2012	2	32	25	-	82				8	GG	PLI7008T	2517	2	45	3	-	146
12	GG	PLI0612T	2012	2	32	35	-	82	10	GG			PLI7010T	2517	4	45	6	-	146		
106	16	GG	PLI0616T	2012	4	32	27	-	82	16	16		GG	PLI7016T	3020	4	52	17	-	146	
	6	GG	PLI1206T	1610	2	26	12.5	-	88		20	20	GG	PLI7020T	3020	4	52	26.5	-	146	
	8	GG	PLI1208T	1610	2	26	22	-	88			180	6	GG	PLI8006T	2517	6	45	3.25	120	156
	10	GG	PLI1210T	2012	2	32	25	-	88				8	GG	PLI8008T	2517	5	45	1.5	120	156
12	GG	PLI1212T	2012	2	32	35	-	88	10	GG			PLI8010T	2517	5	45	6	120	156		
112	16	GG	PLI1216T	2012	4	32	27	-	88	16	16		GG	PLI8016T	3020	4	52	17	-	156	
	6	GG	PLI1806T	2012	2	32	6.5	-	94		20	20	GG	PLI8020T	3020	4	52	26.5	-	156	
	8	GG	PLI1808T	2012	2	32	16	-	94			190	6	GG	PLI9006T	2517	6	45	3.25	120	166
	10	GG	PLI1810T	2517	4	45	6	-	97				8	GG	PLI9008T	2517	5	45	1.5	120	166
12	GG	PLI1812T	2517	4	45	11	-	97	10	GG			PLI9010T	2517	5	45	6	120	166		
118	16	GG	PLI1816T	2517	4	45	20.5	-	97	16	16		GG	PLI9016T	3020	5	52	17	146	166	
	20	GG	PLI1820T	2517	4	45	30	-	97		20	GG	PLI9020T	3020	5	52	26.5	146	166		





Dm	Spor Grooves		Part Nr.	Taper Bush Type	Fig.	L	K	N	J
	Rillen	Mat.							
200	6	GG	PL20006T	2517	6	45	3.25	120	176
	8	GG	PL20008T	2517	5	45	1.5	120	176
	10	GG	PL20010T	3020	5	52	2.5	146	176
	12	GG	PL20012T	3020	5	52	7.5	146	176
	16	GG	PL20016T	3020	5	52	17	146	176
	20	GG	PL20020T	3535	4	89	8	-	176
212	6	GG	PL21206T	2517	6	45	3.25	120	188
	8	GG	PL21208T	2517	5	45	1.5	120	188
	10	GG	PL21210T	3020	5	52	2.5	146	188
	12	GG	PL21212T	3020	5	52	7.5	146	188
	16	GG	PL21216T	3020	5	52	17	146	188
	20	GG	PL21220T	3535	4	89	8	-	188
224	6	GG	PL22406T	2517	6	45	3.25	120	202
	8	GG	PL22408T	2517	5	45	1.5	120	202
	10	GG	PL22410T	3020	5	52	2.5	146	202
	12	GG	PL22412T	3020	5	52	7.5	146	202
	16	GG	PL22416T	3020	5	52	17	146	202
	20	GG	PL22420T	3535	5	89	8	-	202
236	6	GG	PL23606T	2517	6	45	3.25	120	214
	8	GG	PL23608T	2517	5	45	1.5	120	214
	10	GG	PL23610T	3020	5	52	2.5	146	214
	12	GG	PL23612T	3020	5	52	7.5	146	214
	16	GG	PL23616T	3020	5	52	17	146	214
	20	GG	PL23620T	3535	5	89	8	178	214
250	6	GG	PL25006T	2517	9	45	3.25	120	228
	8	GG	PL25008T	2517	5	45	1.5	120	228
	10	GG	PL25010T	3020	5	52	2.5	146	228
	12	GG	PL25012T	3020	5	52	7.5	146	228
	16	GG	PL25016T	3020	5	52	17	146	228
	20	GG	PL25020T	3535	5	89	8	178	228
280	6	GG	PL28006T	2517	6	45	3.25	120	256
	8	GG	PL28008T	2517	6	52	2	146	256
	10	GG	PL28010T	3020	5	52	2.5	146	256
	12	GG	PL28012T	3020	5	52	7.5	146	256
	16	GG	PL28016T	3020	6	89	1.5	178	256
	20	GG	PL28020T	3535	5	89	8	178	256
315	6	GG	PL31506T	2517	9	45	3.25	120	285
	8	GG	PL31508T	3020	9	52	2	146	285
	10	GG	PL31510T	3535	6	89	16	178	285
	12	GG	PL31512T	3535	6	89	11	178	285
	16	GG	PL31516T	3535	6	89	1.5	178	285
	20	GG	PL31520T	4040	5	102	1.5	215	285
355	6	GG	PL35506T	3020	9	52	6.75	146	325
	8	GG	PL35508T	3020	9	52	2	146	325
	10	GG	PL35510T	3535	9	89	16	178	325
	12	GG	PL35512T	3535	9	89	11	178	325
	16	GG	PL35516T	3535	9	89	1.5	178	325
	20	GG	PL35520T	4040	5	102	1.5	215	325

Dm	Spor Grooves		Part Nr.	Taper Bush Type	Fig.	L	K	N	J
	Rillen	Mat.							
400	6	GG	PL40006T	3020	9	52	6.75	146	370
	8	GG	PL40008T	3020	9	52	2	146	370
	10	GG	PL40010T	3535	9	89	16	178	370
	12	GG	PL40012T	3535	9	89	11	178	370
	16	GG	PL40016T	3535	9	89	1.5	178	370
	20	GG	PL40020T	4040	10	102	1.5	215	370
450	6	GG	PL45006T	3020	9	52	6.75	146	420
	8	GG	PL45008T	3020	9	52	2	146	420
	10	GG	PL45010T	3535	9	89	16	178	420
	12	GG	PL45012T	3535	9	89	11	178	420
	16	GG	PL45016T	3535	9	89	1.5	178	420
	20	GG	PL45020T	4040	9	102	1.5	215	420
500	6	GG	PL50006T	3020	9	52	6.75	146	470
	8	GG	PL50008T	3020	9	52	2	146	470
	10	GG	PL50010T	3535	9	89	16	178	470
	12	GG	PL50012T	3535	9	89	11	178	470
	16	GG	PL50016T	3535	9	89	1.5	178	470
	20	GG	PL50020T	5050	9	127	11	267	470
630	6	GG	PL63006T	3020	9	52	6.75	146	600
	8	GG	PL63008T	3020	9	52	2	146	600
	10	GG	PL63010T	3535	9	89	16	178	600
	12	GG	PL63012T	3535	9	89	11	178	600
	16	GG	PL63016T	4040	9	102	1.5	215	600
	20	GG	PL63020T	5050	9	127	11	267	600
800	6	GG	PL80006T	3535	9	89	25.2	178	770
	8	GG	PL80008T	3535	9	89	20.5	178	770
	10	GG	PL80010T	4040	9	102	22.5	215	770
	12	GG	PL80012T	4040	9	102	17.5	215	770
	16	GG	PL80016T	5050	9	127	20.5	267	770
	20	GG	PL80020T	5050	9	127	11	267	770

